

CERTIFICATE OF LOCATION OF GOVERNMENT CORNER

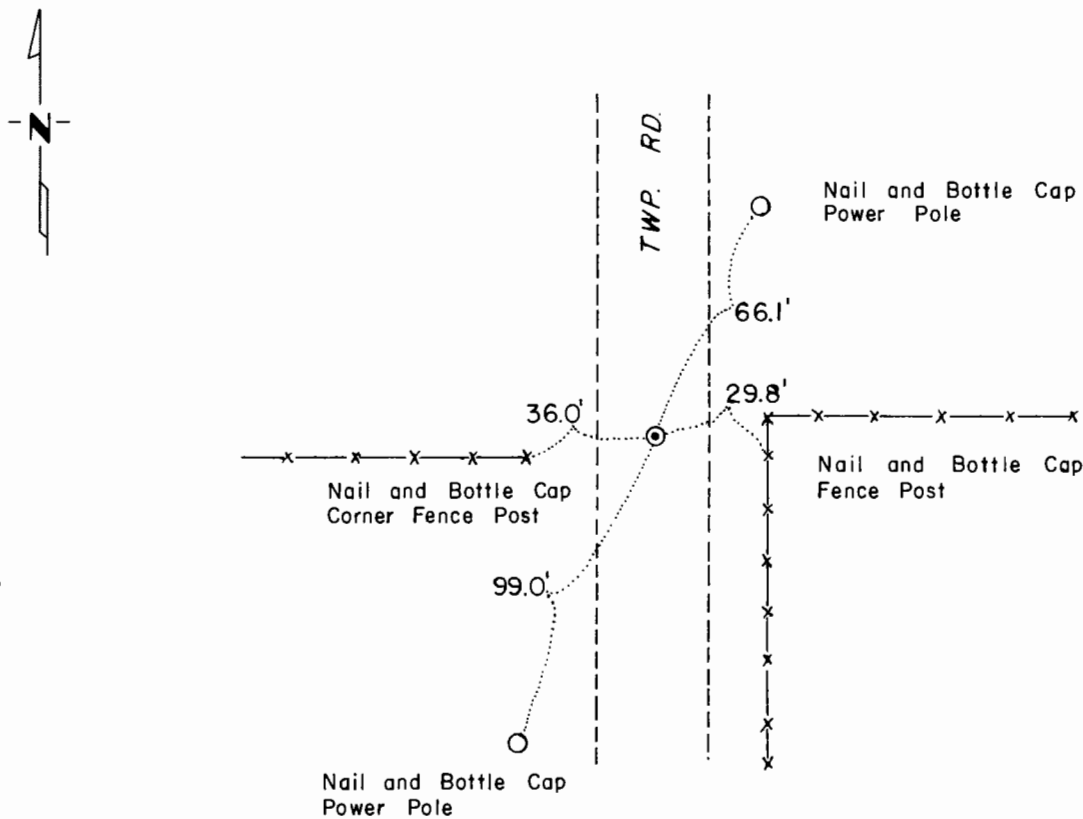
Northeast Corner of Section 6, Township 105, Range 42, 5 P.M.

STATE OF MINNESOTA, County of Murray

At the corner location shown on the sketch:

- On 8-30-73 found a Large Flat Rock 1.8' Down in Centerline Road
DATE
2.5' South of Fence Line East
 left monument as found, lowered monument, removed monument (explain)
- On 8-30-73 placed a Railroad Spike inside of an Iron Pipe over said
DATE
Rock

SKETCH OF REFERENCE TIES



Statement of evidence relative to this corner location is on back of page.

I hereby certify that this document and the data contained herein was prepared by me or under my direct supervision.

Berk R. Eulland 7-23-80
SIGNATURE DATE

Registration No. 10516

- Land Surveyor, Professional Engineer
- County Surveyor, County Engineer

OFFICE OF THE REGISTER OF DEEDS

County of Murray

I hereby certify that this document was filed in the Reg. of Deeds office at 8:30 a.m. on the 9th day of October A.D., 19 81

Register of Deeds William W. Chome

By _____, Deputy

DOCUMENT NO. 164683

Statement of Evidence:

MINNESOTA DEPARTMENT OF NATURAL RESOURCES, BUREAU OF ENGINEERING.

Northeast Corner of Section 6, Township 105, Range 42, 5 P.M.
Murray County.

Corner originally set by Government Land Office in 1866. A post was set - deposited charcoal and made pits and mounds.

In August 1973, the Dept. of Natural Resources Engineering Bureau contacted the Register of Deeds and County Engineer. The Murray County Highway Department corner tie book describes the corner as being a stone in road grade. When, how and who set the stone wasn't mentioned. Derald Karssen, 50 more or less, owner of the South Half of the Southeast Quarter of Section 31, knew of no marker, but he said that the fence line east is considered to be on the section line and the fence line west is south of the section line. Dug with a backhoe and found a flat 1.5' dia. stone 1.8' below road grade and 2.5' south of the fence line east. A 1" x 2" wooden hub was found 0.1' down, 0.4' north and 3.7' west of said stone, but it was ignored. A railroad spike was set in an iron pipe over said stone.